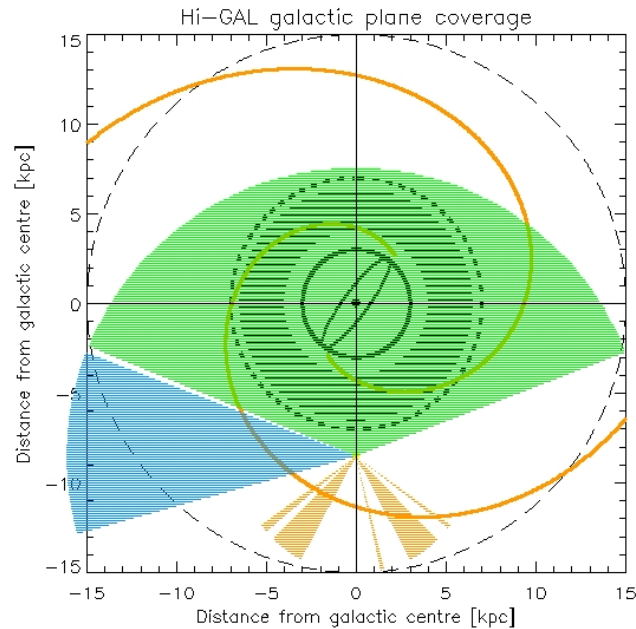


# Hi-GAL: the Herschel Galactic Plane survey

M. Pestalozzi + Hi-GAL team (S. Molinari P.I.)



- Images at 70, 16, 250, 350 and 500 $\mu\text{m}$
- Catalogues of  $10^4 - 10^5$  compact objects
- Thousands of filaments
- Solid statistical studies
- Studies of the diffuse emission
- From star formation to AGB
- Inner Galaxy available, first release end 2012
- End of observations: early 2013

