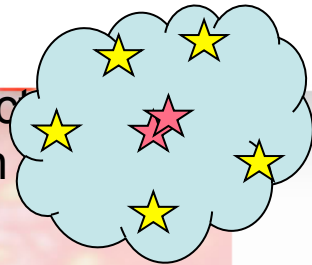


# HII regions control cluster formation ?

Aya Higuchi  
(JAO/NAOJ)

## Without HII region

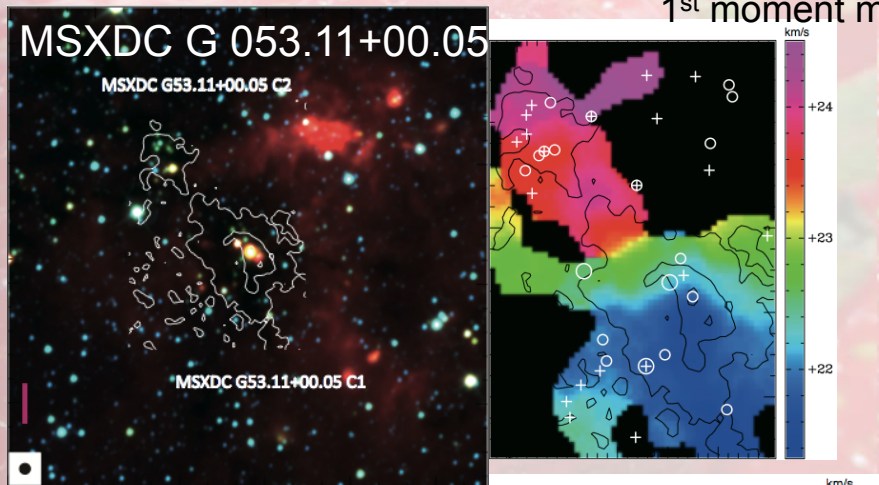
Toward understanding the effect of HII region to the physical condition forming clump and clusters



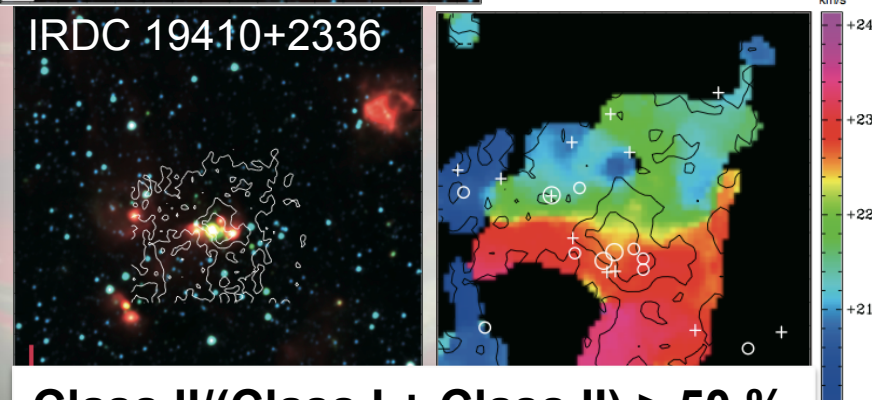
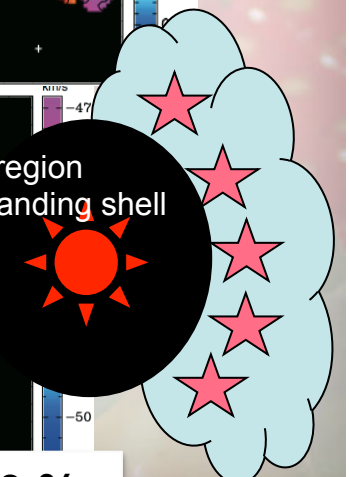
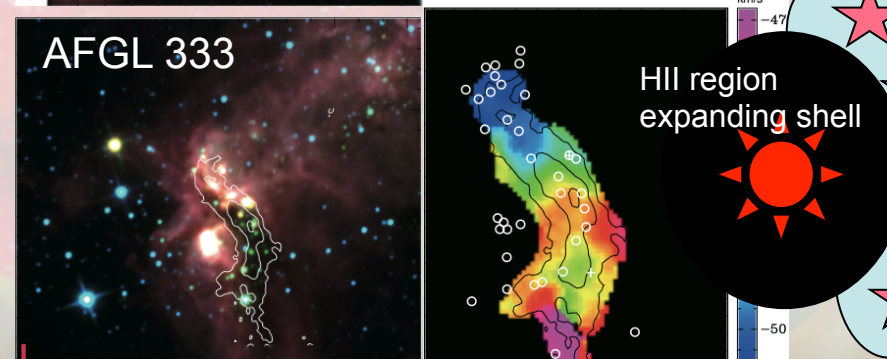
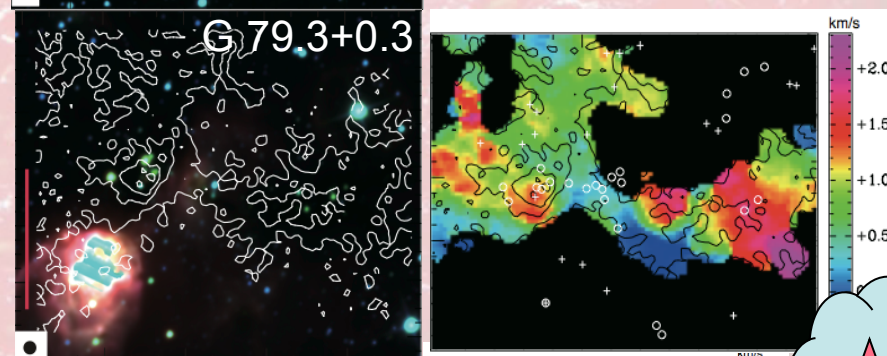
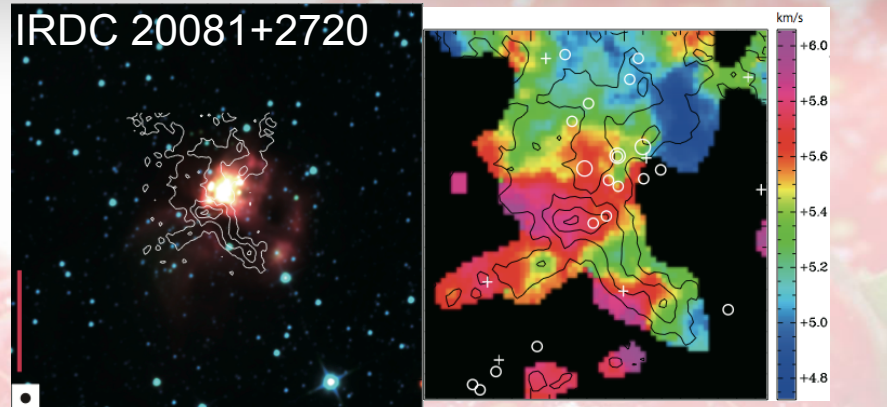
★ Class II  
★ Class I

1st moment map

C<sup>18</sup>O(1-0) vs. WISE 3.4+4.6+12μm



## With HII region



Class II/(Class I + Class II) > 50 %

Class II/(Class I + Class II) < 50 %